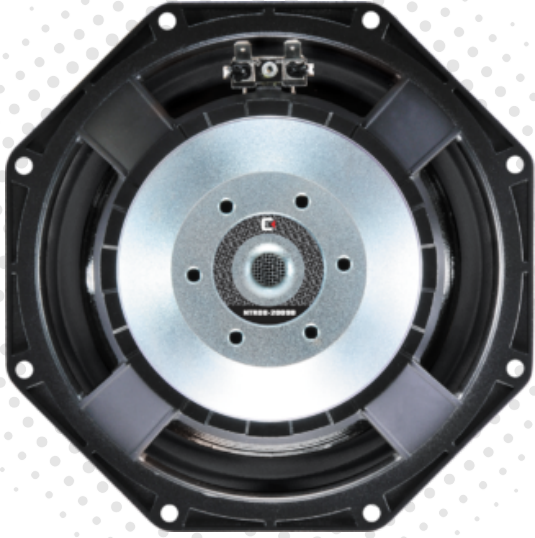


LF Loudspeakers

NTR08-2009D



8-inch cast aluminium chassis, neodymium magnet mid/bass driver

- Coated Kevlar-loaded cone for enhanced weather resistance
- Vented magnet assembly for more efficient cooling

400W

Continuous power rating

94.5dB

sensitivity

2in

Edgewound coil copper voice

General Specifications

Nominal Diameter	203mm / 8in
Power Rating	200W
Continuous power rating	400W
Rated impedance	8 ohm
Sensitivity	94.5dB
Frequency range	70-5000Hz
Chassis type	Cast aluminium
Magnet type	Neodymium
Voice coil diameter	50mm / 2in
Voice coil material	Edgewound copper
Former material	Glass fibre
Cone material	Kevlar loaded paper (weather-resistant)
Surround material	Cloth-sealed
Suspension	Single
Gap height (Hg)	10mm / 0.39in
VC winding height (Hvc)	18mm / 0.67in
Additional impedances	16 ohm

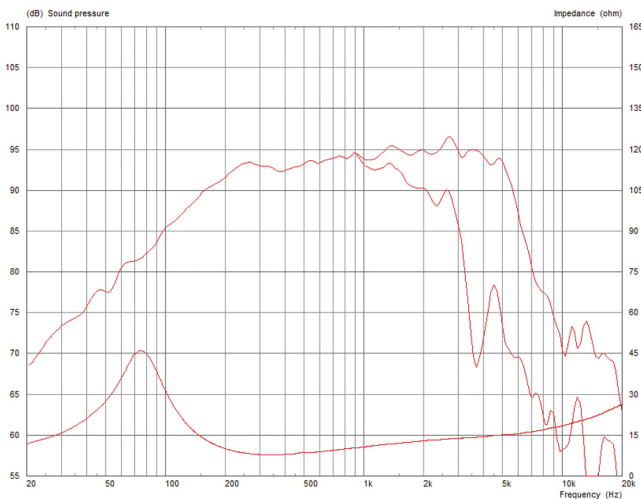
Parameters

Sd	226.98cm ² / 35.18in ²
Fs	71.40Hz
Mms	31.06g / 1.10oz
Qms	2.035
Qes	0.236
Qts	0.211
Re	5.50 ohm
Vas	11.65l / 0.41ft ³
Bl	18.03Tm
Cms	0.16mm/N
Rms	6.85kg/s
Le (at 1kHz)	0.48mH
Xmax	6.5mm / 0.26in

Mounting Information

Overall diameter	225mm / 8.8in (octagonal profile)
Overall depth	100mm / 4.2in
Cut-out diameter	187mm / 7.4in
Mounting hole dimensions	6.5mm / 0.26in
Number of mounting holes	8
Mounting hole PCD	210mm / 8.3in
Unit weight	2.8kg / 6.2lb

Frequency Response and Impedance Curves



Power rating: Tested for two hours using a continuous, band-limited pink noise signal as per AES standard. Power calculated on minimum impedance. Loudspeaker tested in free air.

Continuous power rating: Defined as 3dB greater than the AES rating.

Sensitivity: Measured on axis at 1W, 1m in 2° anechoic environment.

Parameters: Measured after unit subjected to pre-conditioning signal.

Xmax: $0.5 \cdot (Hvc-Hg) + 0.25 \cdot Hg$

Packed Dimensions & Weight

Multi pack qty	8
Multi pack size W x D x H	450mm x 380mm x 260mm / x 17.7in 15.0in x 10.2in
Multi pack weight	24kg / 52.8lb